

CHROMATOGRAPHY MODULES

SYKAM *μ-Series*

- ▶ SMALL FOOTPRINT
- ▶ SINGLE MODULE ADD-ONS
- ▶ INDEPENDENT CONTROLS



MADE IN GERMANY

S 1140 PUMP



The **S 1140 Pump** is a full HPLC pump for auxiliary purposes. Due to its small bench space requirement it can be easily added to any existing system. Typical applications include sample injection pump for preparative systems, concentration pump for sample concentration or any other dosing pump application.

ORDER INFORMATION

S 1140 Pump - stainless steel

Catalog No.	Description	
S012550	S 1140 Pump analytical - stainless steel	- stainless steel pump head (max. 400 bar)
	isocratic Pump	- flowrate 0.001 - 10 ml/min
S012551	S 1140 Pump micro - stainless steel	- stainless steel pump head (max. 400 bar)
	isocratic Pump	- flowrate 0.001 - 4 ml/min
S012552	S 1140 Pump semi-preparative - stainless steel	- stainless steel pump head (max. 100-200 bar)
	isocratic Pump	- flowrate 0.001 - 40 ml/min

S 1140 Pump - PEEK

Catalog No.	Description	
S012553	S 1140 Pump analytical - PEEK	- stainless steel pump head (max. 350 bar)
	isocratic Pump	- flowrate 0.001 - 10 ml/min
S012554	S 1140 Pump micro - PEEK	- stainless steel pump head (max. 350 bar)
	isocratic Pump	- flowrate 0.001 - 4 ml/min
S012555	S 1140 Pump semi-preparative - PEEK	- stainless steel pump head (max. 100-200 bar)
	isocratic Pump	- flowrate 0.001 - 40 ml/min

S 1140 Pump - high pressure (stainless steel)

Catalog No.	Description	
S012556	S 1140 Pump analytical - stainless steel	- stainless steel pump head (max. 600 bar)
	isocratic Pump	- flowrate 0.001 - 10 ml/min
S012557	S 1140 Pump micro - stainless steel	- stainless steel pump head (max. 600 bar)
	isocratic Pump	- flowrate 0.001 - 4 ml/min

Technical Specifications: S 1140 Pump

Flowrate	<i>micro</i>	0.001 - 4 ml/min
	<i>analytical</i>	0.001 - 10 ml/min
	<i>semi-preparative</i>	0.001 - 40 ml/min
Flowrate precision		< 1.0%
Flowrate accuracy		< 0.1% RSD
Control Features	min. pressure, max. pressure, runtime	
Ext. Control	start, stop, RS232	
Dimensions	170x250x190mm (WxDxH)	

S 6530 VALVE ACTUATOR



The **S 6530 Valve Actuator** is a motor driven valve actuator which can be integrated into any system. The actuator can be operated manually via the front panel, by relays input signals (next and previous position) and free control via RS232.

Optionally, the **S 6530 Valve Actuator** is available as “safe operation” version with a built-in encoder to get feedback on the reached position.

ORDER INFORMATION

S 6530 Valve Actuator

Catalog No.	Description	
S012571	S 6530 Valve Actuator	- can mount any S6xxx and S68xx series valve
	without valve	
S012572	S 6530 Valve Actuator with Encoder	- can mount any S6xxx and S68xx series valve
	without valve	- integrated encoder for safety operation

Technical Specifications: S 6530 Valve Actuator

Mounted valve(s)	any Sykam S6xxx or S68xx series valve
Ext. Control	next position, previous position, RS232
Dimensions	170x250x190mm (WxDxH)

S 7520 VACUUM DEGASSER



The **S 7520 Vacuum Degasser** is a full stand-alone HPLC vacuum degasser with low volume chambers.

The integrated Teflon AF capillaries have a low volume (< 300 μ l) per channel.

ORDER INFORMATION

S 7520 Vacuum Degasser (stainless steel)

Catalog No.	Description
S012558	S 7520 Vacuum Degasser - low volume Teflon AF chamber 1-Channel (stainless steel)
S012559	S 7520 Vacuum Degasser - low volume Teflon AF chamber 2-Channel (stainless steel)
S012560	S 7520 Vacuum Degasser - low volume Teflon AF chamber 3-Channel (stainless steel)
S012561	S 7520 Vacuum Degasser - low volume Teflon AF chamber 4-Channel (stainless steel)

S 7520 Vacuum Degasser (PEEK)

Catalog No.	Description
S012562	S 7520 Vacuum Degasser - low volume Teflon AF chamber 1-Channel (PEEK)
S012563	S 7520 Vacuum Degasser - low volume Teflon AF chamber 2-Channel (PEEK)
S012564	S 7520 Vacuum Degasser - low volume Teflon AF chamber 3-Channel (PEEK)
S012565	S 7520 Vacuum Degasser - low volume Teflon AF chamber 4-Channel (PEEK)

Technical Specifications: S 7520 Vacuum Degasser

Volume	<300 µl per channel
Dimensions	170x250x190mm (WxDxH)

S 1420 PERISTALTIC PUMP



The **S 1420 Peristaltic Pump** is a peristaltic pump for auxiliary purposes. The pump has 3 different operation modes: speed control (rpm), volume control (ml/min) and absolute dosing (ml). The pump can be easily calibrated from the menu.

ORDER INFORMATION

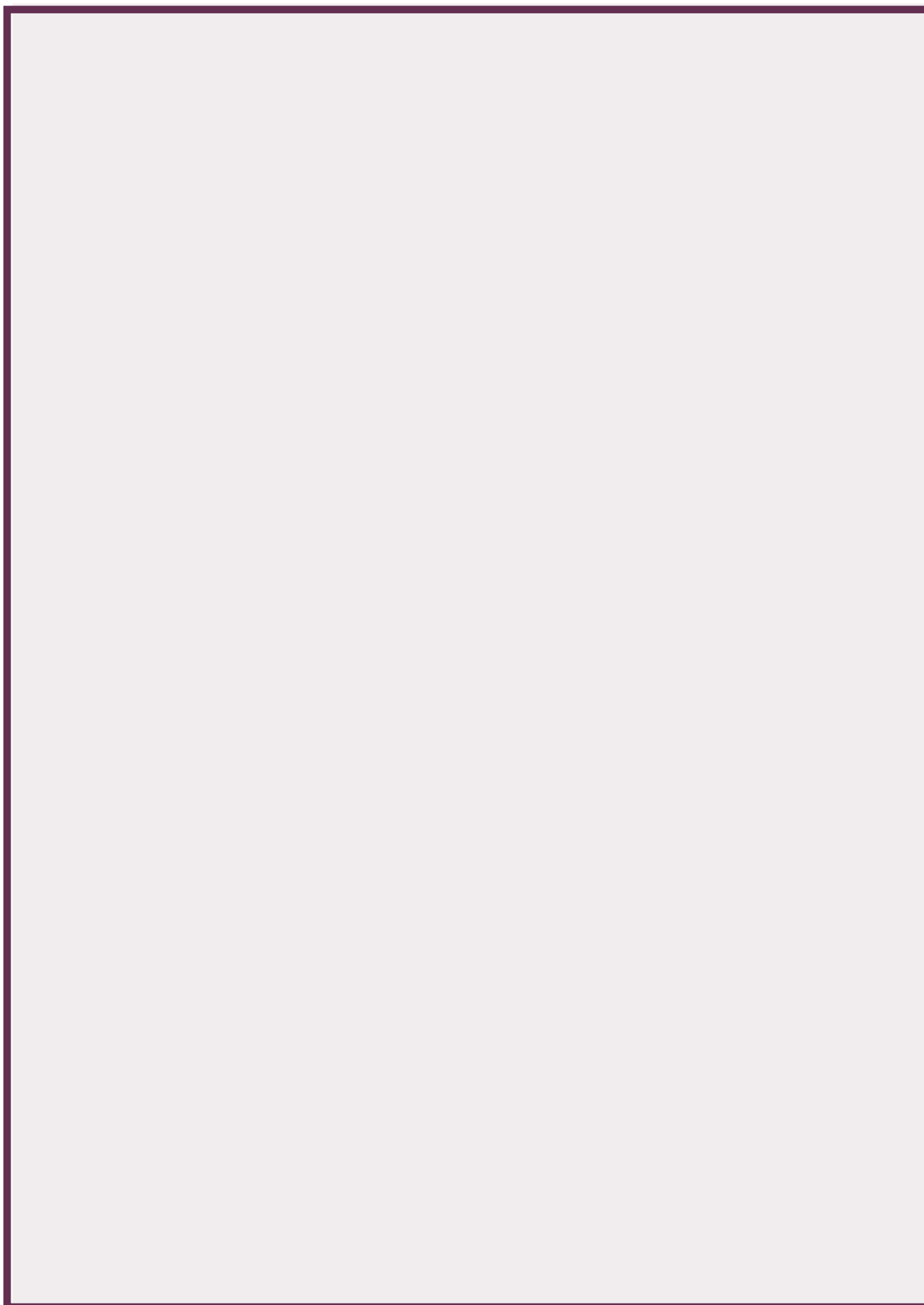
S 1420 Peristaltic Pump

Catalog No.	Description
S012567	S 1420 Peristaltic Pump 1-Channel
S012568	S 1420 Peristaltic Pump 2-Channel
S012569	S 1420 Peristaltic Pump 3-Channel
S012570	S 1420 Peristaltic Pump 4-Channel

Technical Specifications: S 1420 Peristaltic Pump

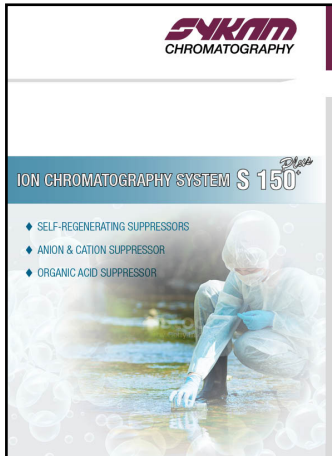
Flow range	0.2 - 19ml/min
Dimensions	170x250x190mm (WxDxH)

TECHNICAL NOTES:



SYKAM PRODUCTS

S 150 Plus IC Systems



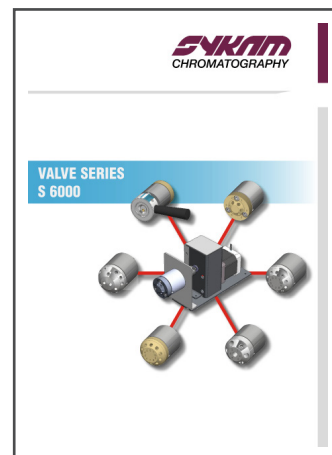
S 600 Series HPLC Systems



Sykam S 433 Amino Acid Analyser



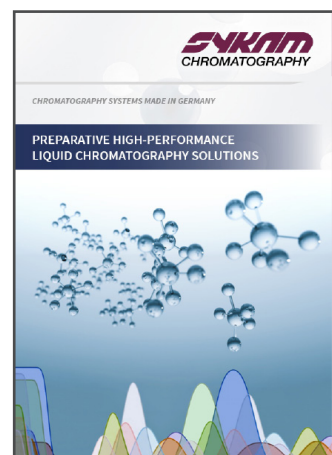
S 6000 Valve Series



Sykam OEM Solutions



Sykam Preparative Solutions



Discover more details and specifications at www.sykam.com
or simply scan here:



Sykam GmbH

Systeme & Komponenten analytischer Meßtechnik

Gewerbering 15
86922 Eresing
Germany

Tel.: +49 (8193) 93 82 - 0
FAX: +49 (8193) 93 82 - 20
EMail: info@sykam.com
Web: <http://www.sykam.com>